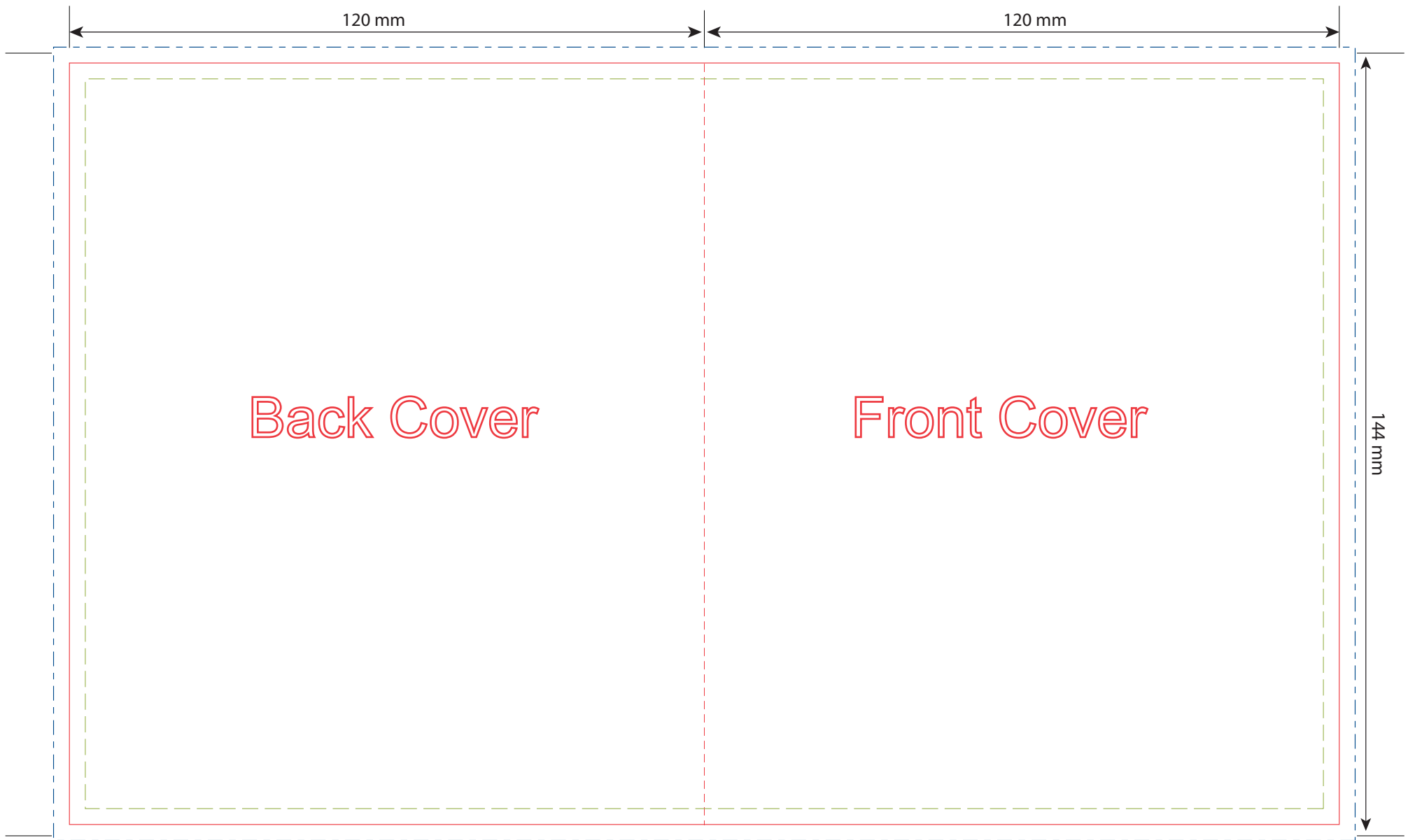


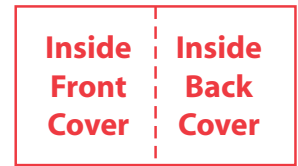
# 2 Panel Blu-ray Insert (Also used for Blu-ray Booklets)

## BDI-201



- - - Type safety
- Cut Line
- - - Bleed Area

*- Please do not included template (except crop mark) on your final artwork when submit.*



Inside Panel

**Note:** Any artwork that does not meet above requirement may be put on hold and cause a delay. Client will have to resubmit new file(s) or authorize SLI to perform artwork modification at extra cost.